



Lancaster Lodge Lodge Hall Drive

, Manchester, M35 0TZ

£950 Per Month

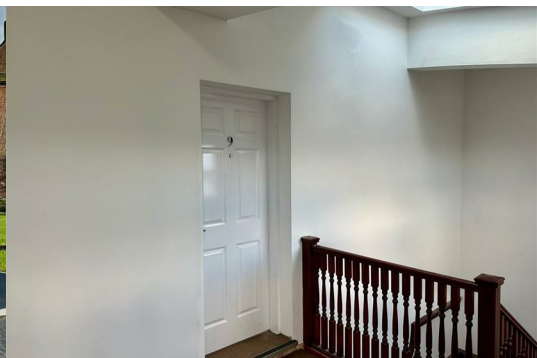


UNIQUE DEVELOPMENT | BRAND NEW | SPACIOUS ROOMS | ONE BEDROOM PLUS STUDY | HISTORICAL BUILDING

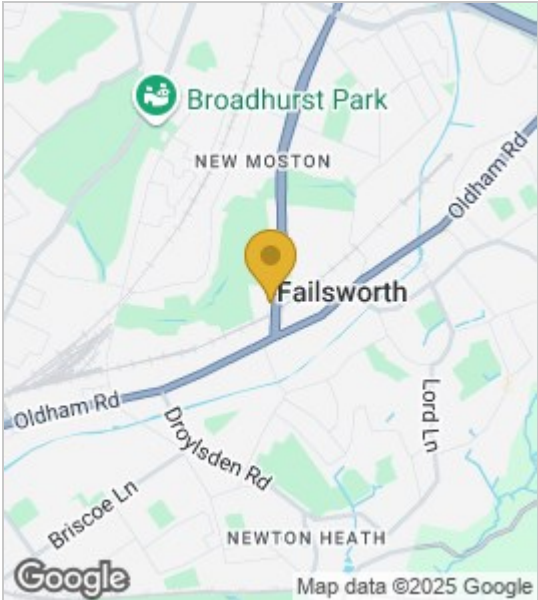
Welcome to Lancaster Lodge, a truly special place where history meets modern living. Nestled in the heart of Failsworth, this brand-new development offers a unique opportunity to live in a beautifully restored historical building with ties to the iconic WW2 Lancaster Bomber. Surrounded by lush green spaces like Moston Brook, this is the perfect place to call home.

Cousins Estate Agents are delighted to present this spacious one-bedroom flat, complete with an additional study adjacent to the generous living area. Enjoy the convenience of plentiful private parking and the charm of a garden city design, with tree-lined boulevards and easy access to local schools, shops, and amenities.

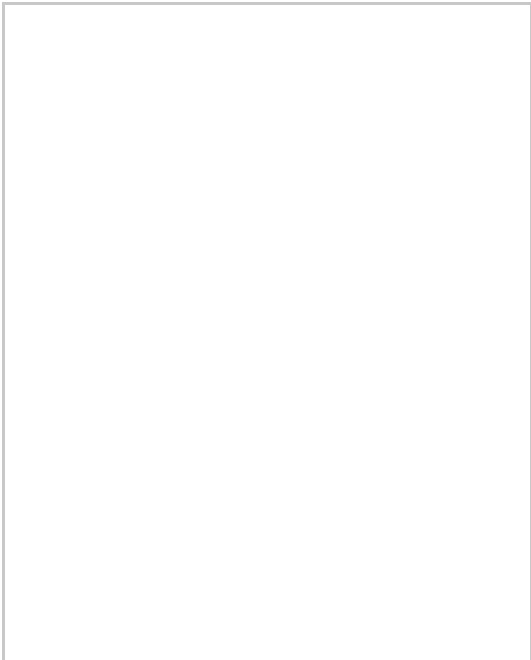
For commuters, Lancaster Lodge is ideally positioned. The A663 Broadway and A62 Oldham Road provide seamless connections to Manchester, Oldham, and beyond, while the nearby Metrolink offers quick and efficient travel into the city centre. The M60 motorway is just a short drive away, making regional and national travel a breeze.



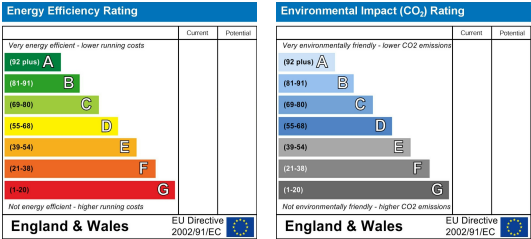
Area Map



Floor Plans



Energy Efficiency Graph



These particulars, whilst believed to be accurate are set out as a general outline only for guidance and do not constitute any part of an offer or contract. Intending purchasers should not rely on them as statements of representation of fact, but must satisfy themselves by inspection or otherwise as to their accuracy. No person in this firms employment has the authority to make or give any representation or warranty in respect of the property.

